



# **SystemC Community Update**

**North American SystemC Users Group**

**February 20, 2007**

# OSCI Membership

*Corporate  
Members*



*Associate  
Members*



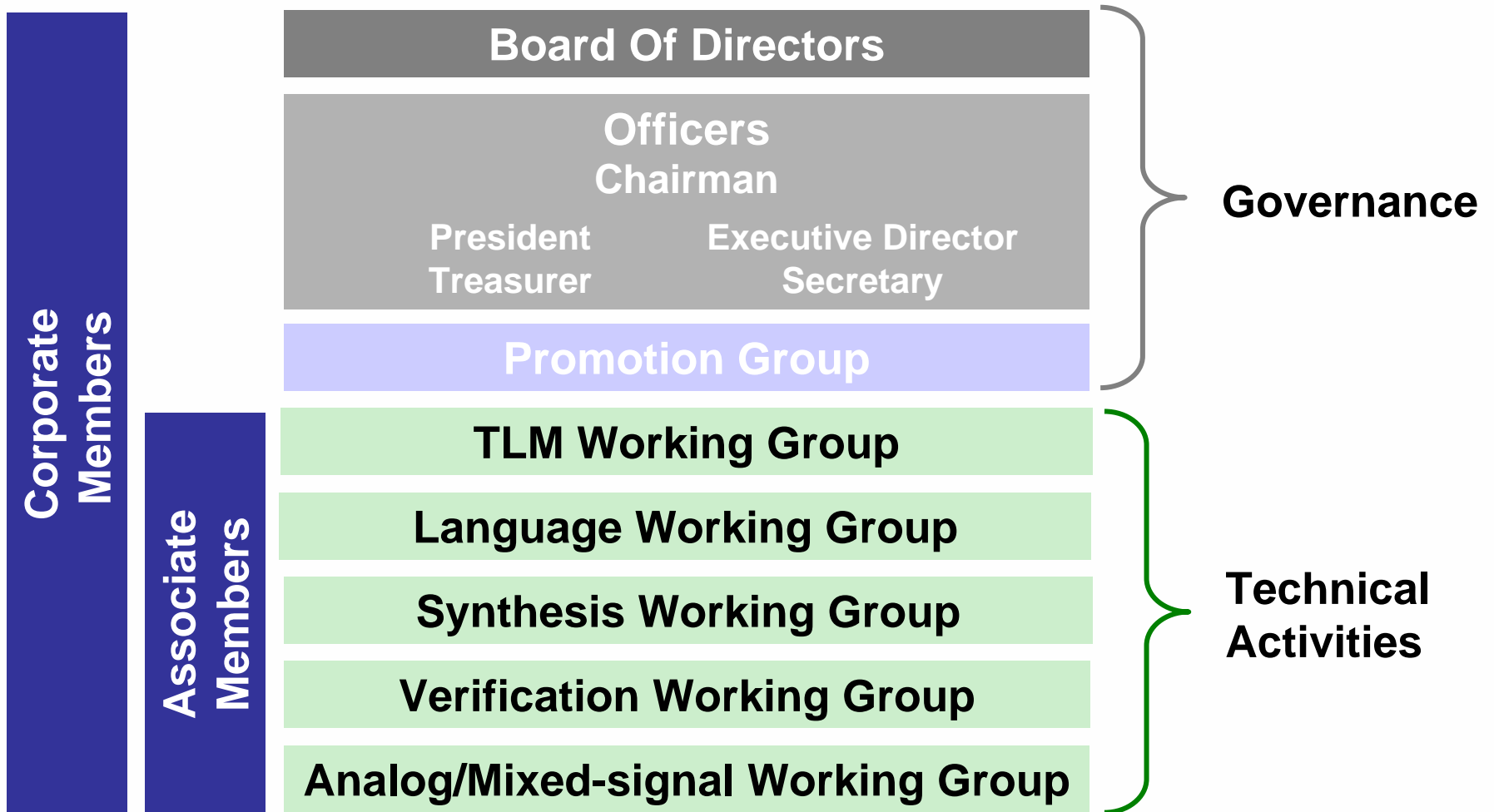
31 member companies total  
9 new since last year



# Significant OSCI Achievements This Year

- Approval of IEEE 1666<sup>TM</sup>-2005 standard for SystemC
- Availability of IEEE 1666<sup>TM</sup>-2005 LRM on IEEE web site without charge to users
- Release of SystemC 2.1v1 open source proof-of-concept library
- Release of SCV 1.0p2 verification library
- Public review of SystemC 2.2 library
- Public review of Synthesizable Subset document
- ~30% increase in number of member companies

# OSCI Organization



# Working Groups Update

- **Language Working Group**
  - SystemC 2.2 draft available for public review
  - Repairs all known incompatibilities with 1666
- **Synthesis Working Group**
  - Synthesizable subset document draft available for public review
- **AMS Working Group**
  - Defining Analog/Mixed-signal extensions for SystemC
- **Verification Working Group**
  - SCV 1.0p2 released
- **Transaction-level Modeling Working Group**
  - TLM 2.0 initial draft in public review
  - Thanks to all who have provided feedback!
  - Now incorporating feedback
  - LOTS more information in this afternoon's tutorial



# What are we working on ?

- From Dec. 4 2006: Public review of TLM 2.0 Draft

- APIs for address-mapped systems
- Generic PV
- Generic PVT
- Analysis/Profiling Interface

*What* transactions do we move ?

- Currently analyzing comments from public review of TLM 2.0 draft

- On-going WG work on TLM standard Configuration and Control APIs

- Interrupt Modeling
- Memory Map Services
- Memory / Register Modeling
- Configuration Interface
- Debug Interface

How do we *control* and *analyse* the transactions moving through the TLM ?

# TLM 2.0 Roadmap

TLM IEEE

2.0 standard draft  
for Public review

- \* Timed TLM core i/f
- \* Analysis interface
- \* PV / PVT payloads
- \* Examples

2.0 draft upgrade

- \* Including results from initial WG analysis of users comments

2.0 standard  
Official release

- Including results from final WG analysis of users feedback
- Begin LRM

IP/SoC'06

DATE'07

DAC'07

Dec.4 '06    Feb.9 '07

Users feedback



# Thank You!

